



HSM V-Press 605

Die kompakte Vertikal-Ballenpresse mit weit öffnender Doppeltür reduziert das Volumen von Karton, Stanzresten, Papier oder Folie zuverlässig und wirtschaftlich. Der Pressvorgang startet unmittelbar nach dem Schließen der Tür. Der Ballenauswurf erfolgt automatisch. Leistungsgesteigerte Produktvariante für Drehstrom-Anschluss

Technical data

Order number:	6112164	Pressing power:	57 t
Maximum bale weight:	70 lb	Width x Depth x Height:	1198 x 823 x 1986 "
Loading aperture (WxH):	800 x 495 "		

Product Information:



The powerful system is designed as Plug&Press and can be put into operation immediately at the installation location



To fill the press, the upper half of the doors is swung to the right



Special retaining claws optimize the compression of the pressing material.



Automatic start of the pressing process after closing the door



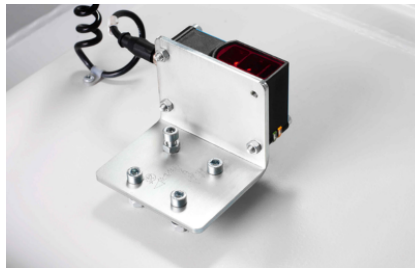
Convenient membrane keypad with text display, which shows the current status of the machine



Hand wheel door lock - Easy to handle thanks to counter-rotating thread for quick opening and closing



Massive press ram and extremely robust press plate guidance



HSM TCS (Torsion Control System) for monitoring press ram movement



Manual bale strapping with continuous polyester tape



Suitable for cardboard as well as film

