

HSM CP 4988



Das effektive System zum PET-Recycling reduziert in einem Arbeitsgang das Volumen leerer PET-Flaschen um bis zu 90 % und erzeugt aus ihnen kompakte Rohstoffballen.

Technical data

Order number:	6577144	Throughput per hour PET bottles (1 litre):	4000
Bale weight:	100 x 100 lb	Dimensions of machine (WxDxH):	990 x - x 1800 "
Working width:	490 "		

Product Information:



Automatic photoelectric control of the pressing process - display to indicate "bale ready"



Manual, 3-fold strapping with continuous polyester strap - bale weight up to 100 kg



Manual and automatic filling possible



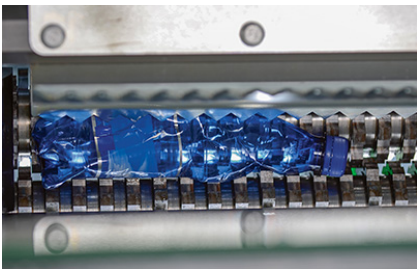
Throughput per hour up to 4000 PET bottles (1 litre)



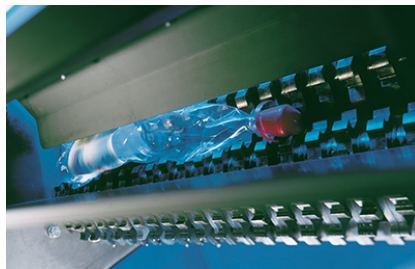
Efficient PET recycling system to reduce the volume of empty PET bottles by up to 90 % and produce compact raw material bales



A scraper system removes the compressed plastic bottles and cans from the crusher rollers to prevent blockages and downtime while clearing



A dosing shaft with integrated blades ensures that the plastic bottles and cans are fed reliably



Crusher rollers made of specially hardened and ground steel, completely resistant to wear and very strong, for a long service life

