



HSM StoreEx HDS 230 - 0,78 x 1.5-2

HSM StoreEx HDS 230 digital data media shredder

Secure, data protection compliant and economical. This digital data media shredder shreds digital data carriers into little particles and makes data recreation virtually impossible.

Technical data

Order number:	1777127F	Cutting capacity HDD 2,5":	280,0 ST/H
EAN	4026631075893	Cutting capacity CD/DVD:	6000 St/h
Cutting type:	particle cut	Cutting capacity magnetic tapes:	420 St/h
Cutting size:	0,39" x 1-1.18"	Loading aperture Length x Width x Height:	11.81" x 6.5" x 2.36"
Security level (DIN 66399):	E-2 H-5 O-2 T-3	Noise level (idle operation):	ca. 55 dB(A)
Voltage / Frequency:	208 V / 60 Hz	Width x Depth x Height:	113.35" x 35.63" x 67.4"
Intake width:	6.5"	Weight:	2700.66 lb
Container volume / collecting:	11.9 gal	Shredder material:	Credit card, CD/DVD, Floppy disk, Hard drives up to 3.5", Magnetic tapes up to 3.5"
Cutting capacity HDD up to 3,5":	280 St/h		

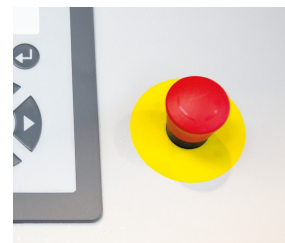
Product information



The discharge conveyor belt makes the collection of the shredded material easy and convenient. Any standard container can be used to collect the material at the end of the conveyor belt.

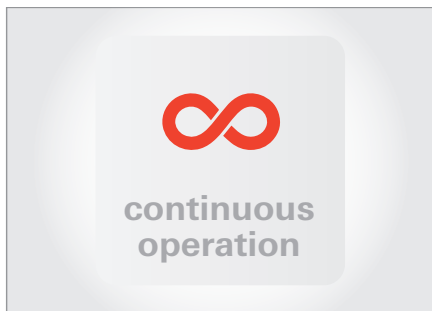


Thin optical, magnetic and electronic data media can be shredded comfortably and quickly using the input slot.



It may be necessary to stop the machine immediately so we have equipped the device with an emergency off switch which, when activated, will do just this.

HSM®



Continuous energy-saving operation

This powerful machine provides an excellent cutting performance combined with reliable continuous operation



Low power consumption

The stand-by feature ensures a high degree of energy saving when the digital data media shredder is not in use.



Material anti-jam function

The automatic reverse function rectifies material jams and ensures smooth shredding operations.



High level of user safety

User safety is paramount. A slight pressure on the safety element immediately stops the material feed and prevents unintentional entry into the machine.



Automatic start/stop

An integrated light barrier automatically starts the device when paper is introduced into the feed and automatically stops it after shredding is complete.



Mobile on castors

For convenience, there are castors on the digital data media shredder so it is easy to move around.

